



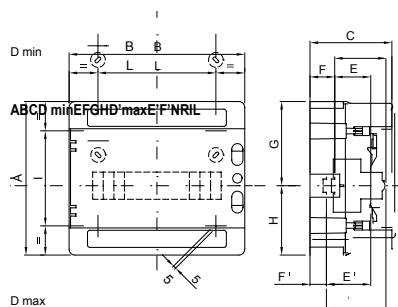
IP65 range of watertight enclosures from 4 to 72M with smoked transparent door. The main technical features are: reversible front and back panel, removable frames and panels with windows and detachable doors with up to 180° opening and lock accessory. The enclosures can be equipped with bipolar and unipolar terminal blocks, 80 A and 125 A, with screw wiring; they allow to create simple and neat wiring reducing the set-up time of the enclosure.

Insulation class	II (according to IEC 61140 standards)	Colour	Grey RAL 7035
Outer dim. LxHxD (mm)	143x210x100	IP degree	IP65
Dispersible power (W)	13	Mechanical resistance	IK09
Rated voltage	400V	No. of modules EN 50022	4
Rated current	125 A	Glow Wire Test	650 °C
Operating temperature	-25 +60 °C	Insulation voltage (Ui)	1000 V
Type of material	Halogen-free in compliance with EN 60754-2	Thermo-pressure with ball	70 °C
Standard	EN 60670-1 (CEI 23-48) IEC60670-24 CEI 23-49	Insulation voltage	1000 V according to EN 62208 both in ac as well as in dc

#### BEHAVIOUR WITH CHEMICAL AND ATMOSPHERIC AGENTS

Saline solution	Acids		Bases		Solvents				Mineral oil	UV rays
	Concentrated	Diluted	Concentrated	Diluted	Hexane	Benzol	Acetone	Alcohol		
Resistant	Not resistant	Limited resistance	Not resistant	Limited resistance	Limited resistance	Not resistant	Not resistant	Limited resistance	Limited resistance	Limited resistance

#### DIMENSIONAL



4M	GW 40 101	210	143	100	75	48	15	105	105				3	156	67
----	-----------	-----	-----	-----	----	----	----	-----	-----	--	--	--	---	-----	----

#### TECHNICAL SYMBOLOGY

II (according to IEC 61140 standards)	IP65	IK09	650 °C	-25 +60 °C	Halogen-free in compliance with EN 60754-2	70 °C	1000 V according to EN 62208 both in ac as well as in dc

#### STANDARDS/APPROVALS

